

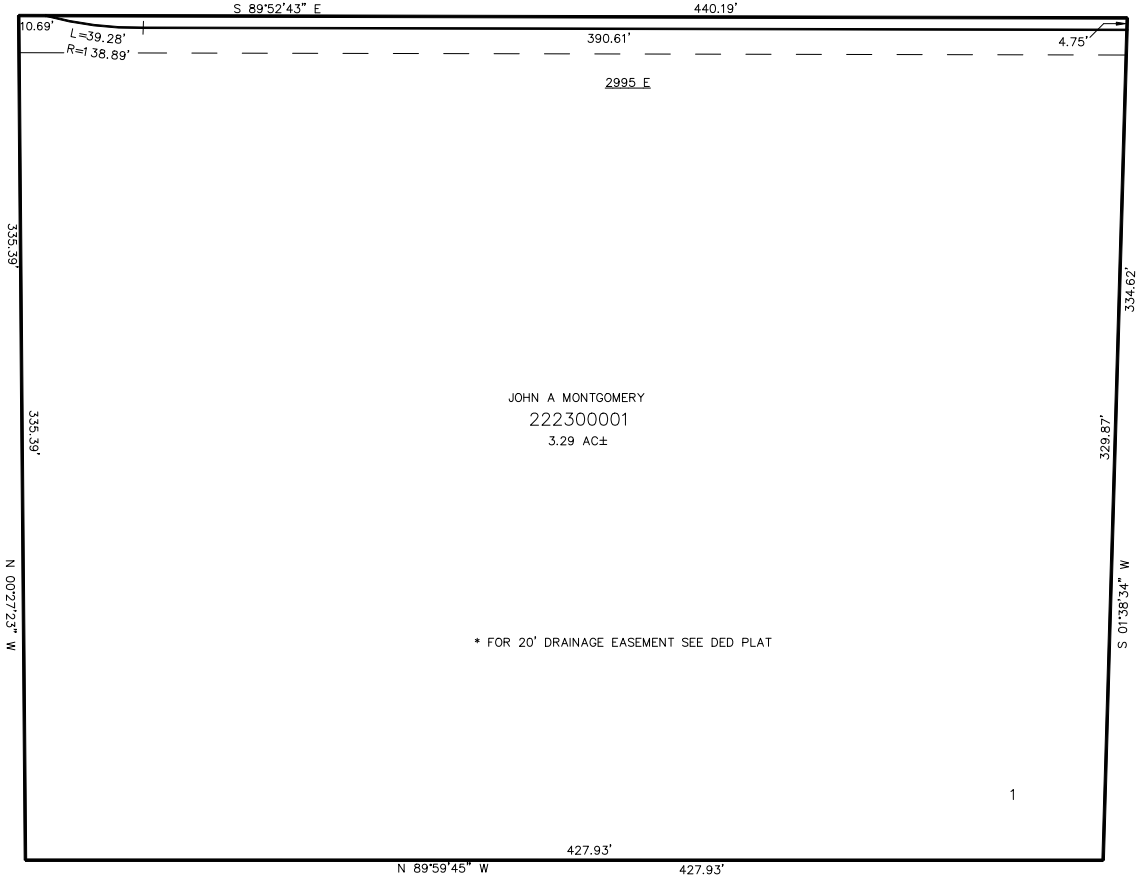
PART OF THE NE.1/4, OF SECTION 7, T.7N., R.1E., S.L.B. & M.  
JOHN MONTGOMERY SUBDIVISION

IN WEBER COUNTY  
SCALE 1" = 40'

TAXING UNIT: 36

SEE PAGE 4-1

5750 NORTH ST



SEE PAGE 4-1

SEE PAGE 4-1

SEE PAGE 4-1

10' UTILITY & DRAINAGE EASEMENTS EACH  
SIDE OF PROPERTY LINES AS INDICATED  
BY DASHED LINES EXCEPT AS OTHERWISE  
SHOWN.

FOR COMPLETE ENG DATA SEE  
ORIGINAL DEDICATION PLAT IN  
BOOK 61, PAGE 55 OF RECORDS.